



CONTENTS

We want to thank our customers who use the Touch Operation Panel.

1. System configuration [Page 2](#)

Describes the devices required for connection, the setting of each device, cables, and configurable systems.

2. External device selection [Page 3](#)

Select a TOP model and an external device.

3. TOP communication setting [Page 4](#)

Describes how to set the TOP communication.

4. External device setting [Page 9](#)

Describes how to set up communication for external devices.

5. Supported addresses [Page 11](#)

Refer to this section to check the addresses which can communicate with an external device.

1. System configuration

The system configuration of TOP and "IP Camera" is as follows:

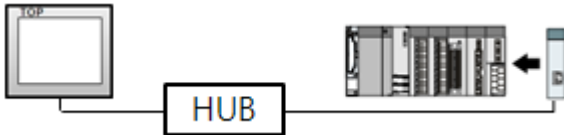
| Communication method | Communication setting | Cable |
|----------------------|--|------------------------------------|
| RTSP/RTP/ONVIF | 3. TOP communication setting 4. External device setting | Twisted pair cable* Note 1) |

*Note 1) Twisted pair cable

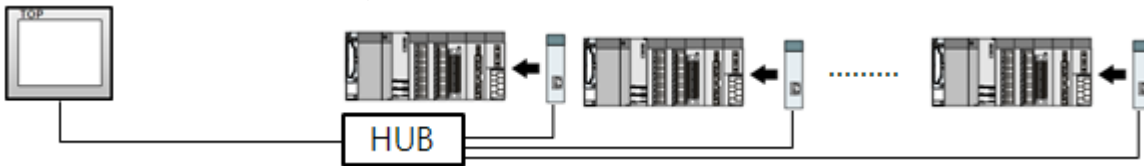
- Refer to STP (Shielded Twisted Pair Cable) or UTP (Unshielded Twisted Pair Cable) Category 3, 4, 5.
- Depending on the network configuration, you can connect to components such as the hub and transceiver, and in this case, use a direct cable.

■ Connectable configuration

- 1:1 connection (one TOP and one external device) connection

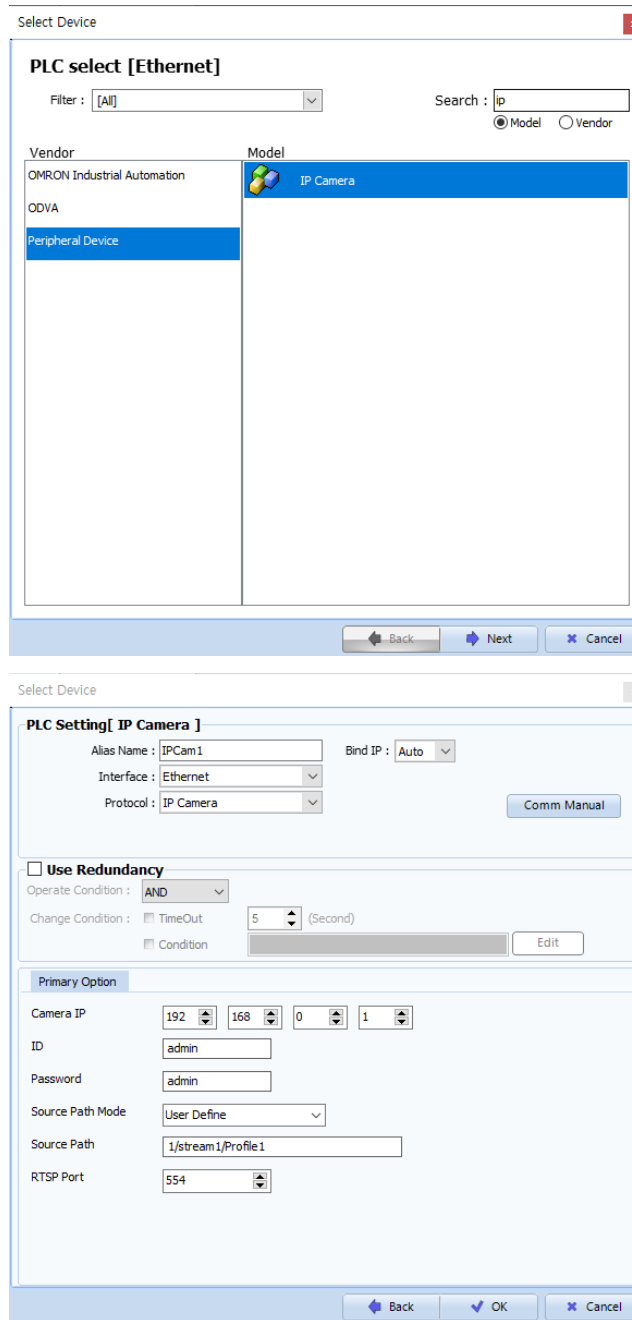


- 1:N connection (one TOP and multiple external devices) connection



2. External device selection

- Select a TOP model and a port, and then select an external device.



| Settings | | Contents |
|-----------------|--------|--|
| TOP | Model | Check the TOP display and process to select the touch model. |
| External device | Vendor | Select the vendor of the external device to be connected to TOP. Select "OTHERS Manufacture". |
| | PLC | Select the external device to be connected to the TOP. Select "IP Camera". |

3. TOP communication setting

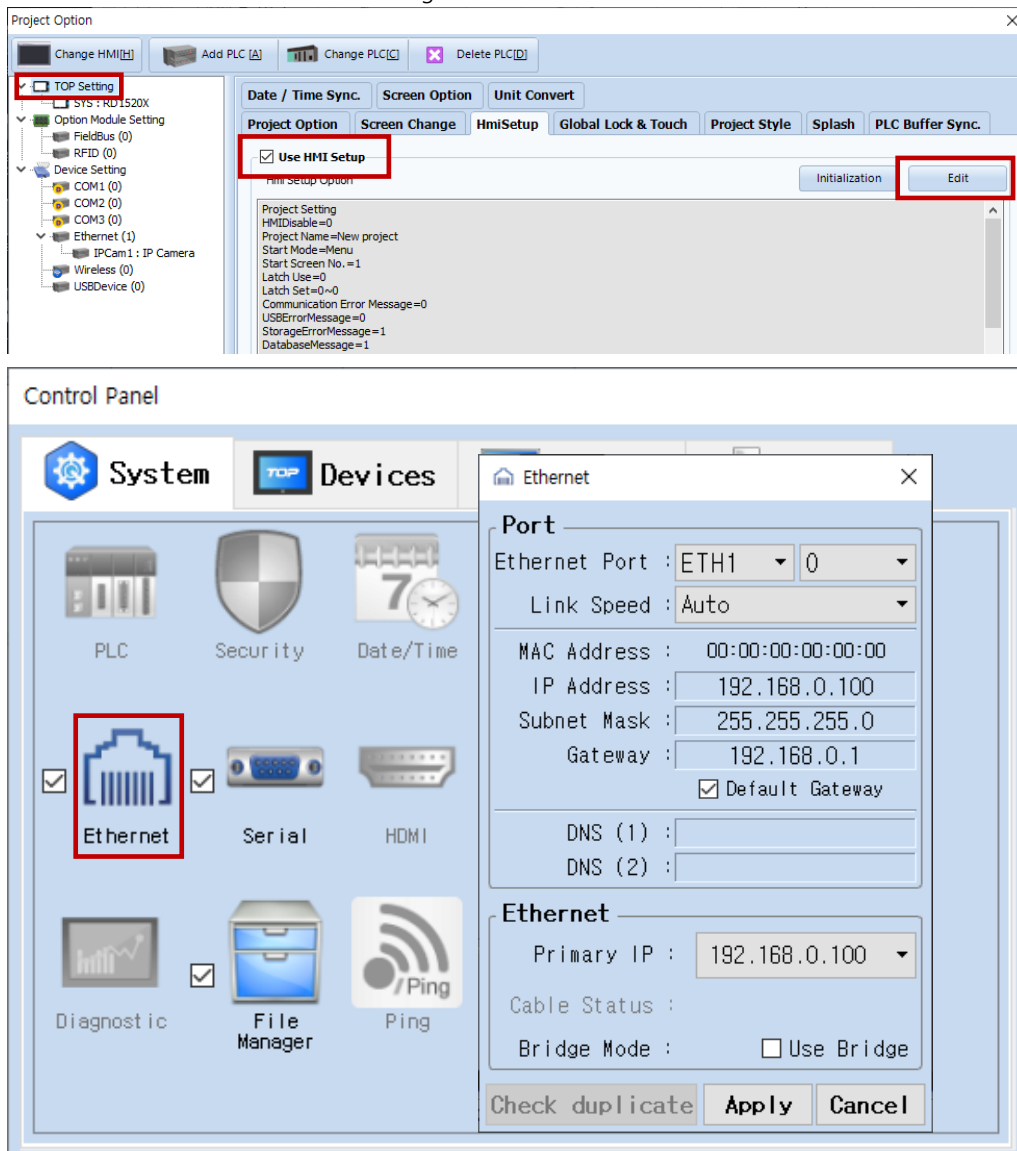
The communication can be set in TOP Design Studio or TOP main menu. The communication should be set in the same way as that of the external device.

3.1 Communication setting in TOP Design Studio

(1) Communication interface setting

■ [Project > Project Property > TOP Setting] → [Project Option > "Use HMI Setup" Check > Edit > Ethernet]

– Set the TOP communication interface in TOP Design Studio.



| Items | TOP | External device | Remarks |
|---|---------------|-----------------|---------|
| IP Address* Note 1 Note 2) | 192.168.0.100 | 192.168.0.51 | |
| Subnet Mask | 255.255.255.0 | 255.255.255.0 | |
| Gateway | 192.168.0.1 | 192.168.0.1 | |

*[Note 1](#)) The network addresses of the TOP and the external device (the first three digits of the IP, 192 . 168 . 0 . 0) should match.

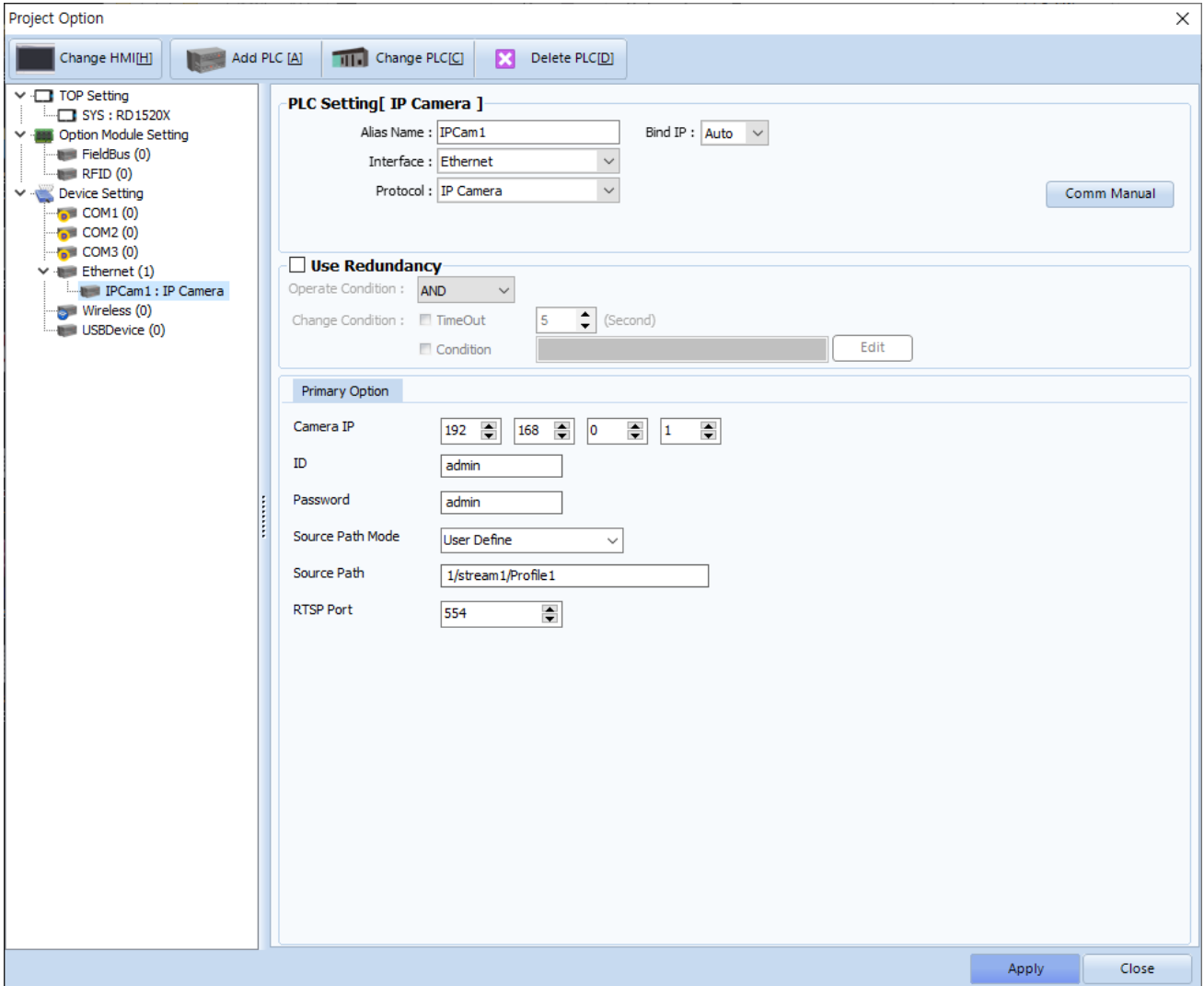
*[Note 2](#)) Do not use duplicate IP addresses over the same network.

* The above settings are examples recommended by the company.

| Items | Description |
|-------------|--|
| IP Address | Set an IP address to be used by the TOP to use over the network. |
| Subnet Mask | Enter the subnet mask of the network. |
| Gateway | Enter the gateway of the network. |

(2) Communication option setting

- [Project > Project Property > Device Setting > ETHERNET > "PLC1 : IPCamera"]

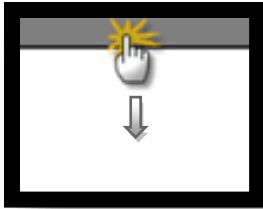


| Items | Settings | Remarks |
|-------------|---|---|
| Interface | Select "Ethernet". | Refer to "2. External device selection" . |
| Protocol | Select "IP Camera". | |
| Camera IP | Enter the IP address of the external device. | |
| RTSP Port | Enter the RTSP port of the external device. | |
| ID | Enter the external device ID. | |
| Password | Enter the password for the external device. | |
| Source Path | Enter the RTSP address path of the external device. | |

3.2. Communication setting in TOP

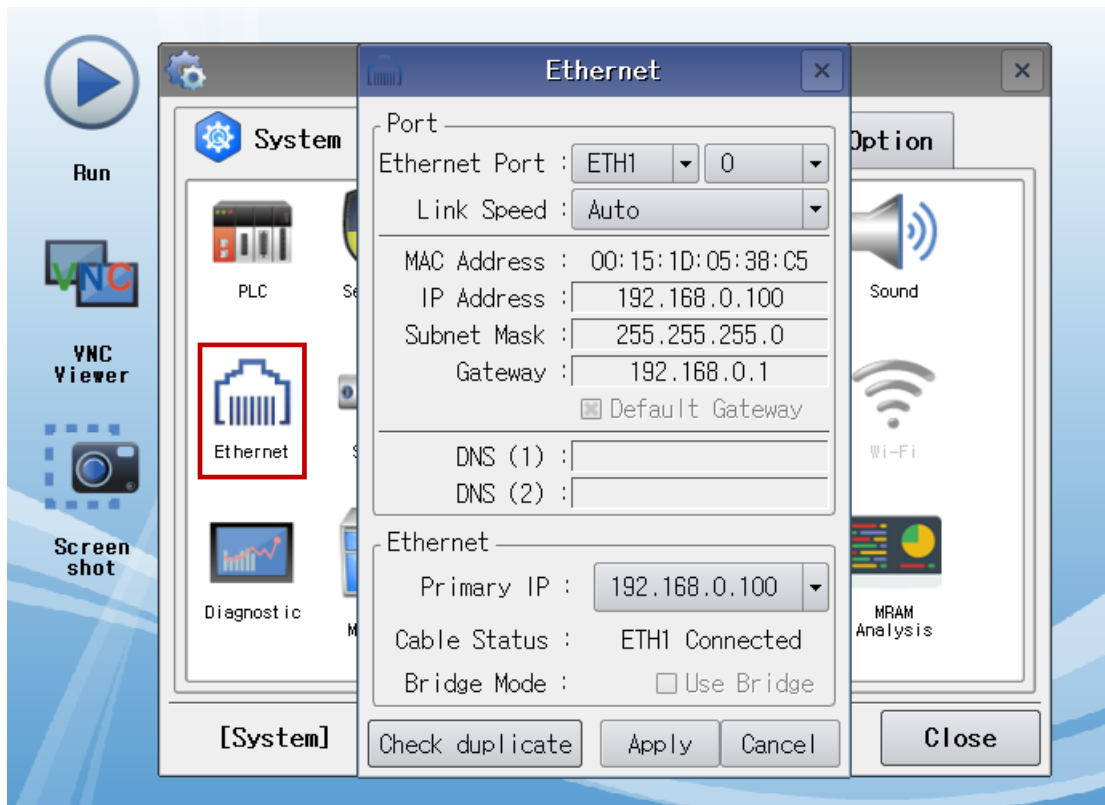
* This is a setting method when "Use HMI Setup" in the setting items in "3.1 TOP Design Studio" is not checked.

- Touch the top of the TOP screen and drag it down. Touch "EXIT" in the pop-up window to go to the main screen.



(1) Communication interface setting

- [Main Screen > Control Panel > Ethernet]



| Items | TOP | External device | Remarks |
|---|---------------|-----------------|---------|
| IP Address* Note 1) Note 2) | 192.168.0.100 | 192.168.0.51 | |
| Subnet Mask | 255.255.255.0 | 255.255.255.0 | |
| Gateway | 192.168.0.1 | 192.168.0.1 | |

*[Note 1](#)) The network addresses of the TOP and the external device (the first three digits of the IP, 192 . 168 . 0 . 0) should match.

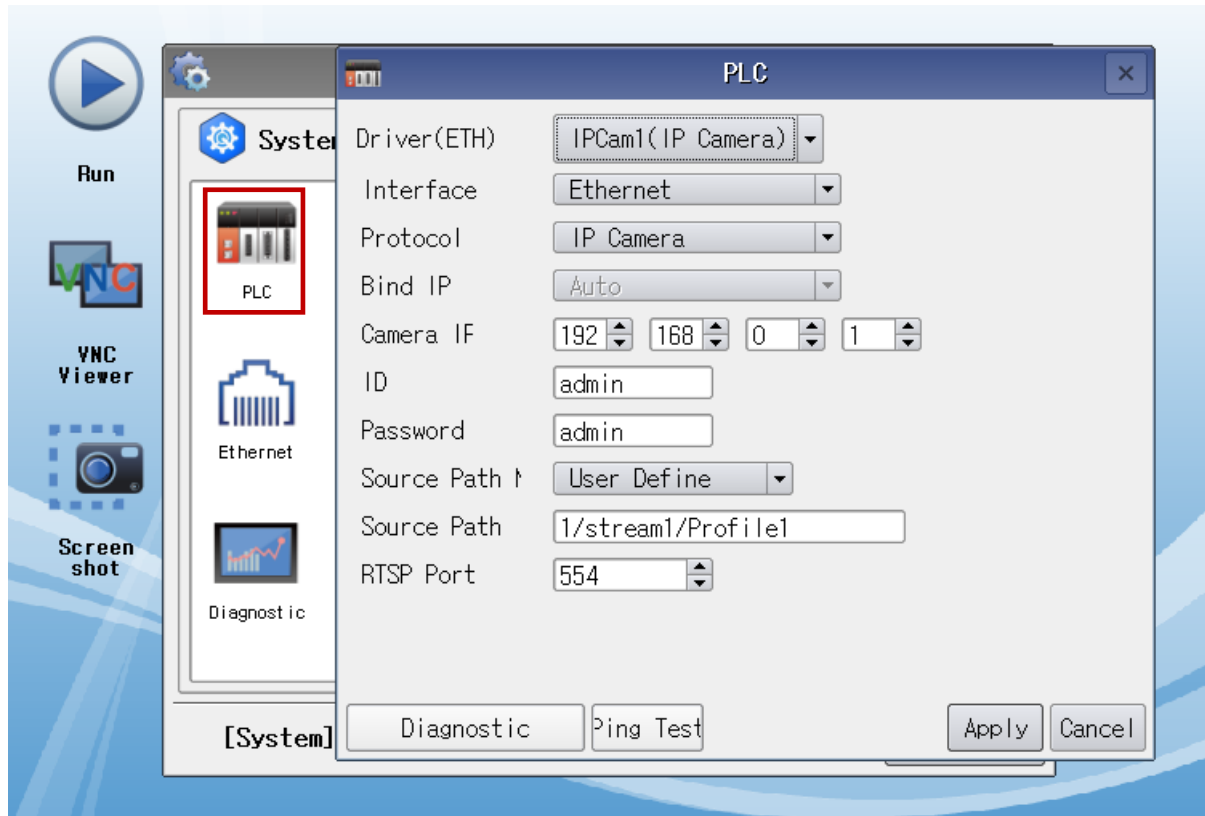
*[Note 2](#)) Do not use duplicate IP addresses over the same network.

* The above settings are examples recommended by the company.

| Items | Description |
|-------------|--|
| IP Address | Set an IP address to be used by the TOP to use over the network. |
| Subnet Mask | Enter the subnet mask of the network. |
| Gateway | Enter the gateway of the network. |

(2) Communication option setting

■ [Main Screen > Control Panel > PLC]



| Items | Settings | Remarks |
|-------------|---|--|
| Interface | Select "Ethernet". | Refer to "2. External device selection". |
| Protocol | Select "IP Camera". | |
| Camera IP | Enter the IP address of the external device. | |
| RTSP Port | Enter the RTSP port of the external device. | |
| ID | Enter the external device ID. | |
| Password | Enter the password for the external device. | |
| Source Path | Enter the RTSP address path of the external device. | |

3.3 Communication diagnostics

- Check the interface setting status between the TOP and an external device.
 - Touch the top of the TOP screen and drag it down. Touch "EXIT" in the pop-up window to go to the main screen.
 - Check if the ETH port settings you want to use in [Control Panel > Ethernet] are the same as those of the external device.

- Diagnosis of whether the port communication is normal or not
 - Touch "Communication diagnostics" in [Control Panel > PLC].
 - The Diagnostics dialog box pops up on the screen and determines the diagnostic status.

| | |
|-----------------------|--|
| OK | Communication setting normal |
| Time Out Error | Communication setting abnormal - Check the cable, TOP, and external device setting status. (Reference: Communication diagnostics sheet) |

- Communication diagnostics sheet
 - If there is a problem with the communication connection with an external terminal, please check the settings in the sheet below.

| Items | Contents | Check | | Remarks | |
|----------------------|---------------------------------------|---------------------------|---|--|----|
| System configuration | How to connect the system | OK | NG | 1. System configuration | |
| | Connection cable name | OK | NG | | |
| TOP | Version information | OK | NG | 2. External device selection 3. Communication setting | |
| | Port in use | OK | NG | | |
| | Driver name | OK | NG | | |
| | Other detailed settings | OK | NG | | |
| | Relative prefix | Project setting | OK | | NG |
| | | Communication diagnostics | OK | | NG |
| | Ethernet port setting | IP Address | OK | | NG |
| Subnet Mask | | OK | NG | | |
| Gateway | | OK | NG | | |
| External device | CPU name | OK | NG | 4. External device setting | |
| | Communication port name (module name) | OK | NG | | |
| | Protocol (mode) | OK | NG | | |
| | Setup Prefix | OK | NG | | |
| | Other detailed settings | OK | NG | | |
| | Ethernet port setting | IP Address | OK | | NG |
| | | Subnet Mask | OK | | NG |
| Gateway | | OK | NG | | |
| Check address range | OK | NG | 5. Supported addresses (For details, please refer to the PLC vendor's manual.) | | |

4. External device setting

In order to find the RTSP address of the IP Camera, use the "ONVIF Device Manager" as shown below.

For a more detailed setting method than described in this example, refer to the corresponding vendor's user manual for the external device.



- The network addresses of the TOP and the external device (the first three digits of the IP, 192 . 168 . 0 . 0) should match.
- Do not use duplicate IP addresses over the same network.

Step 1. Enter the "Name", "Password" to log in.

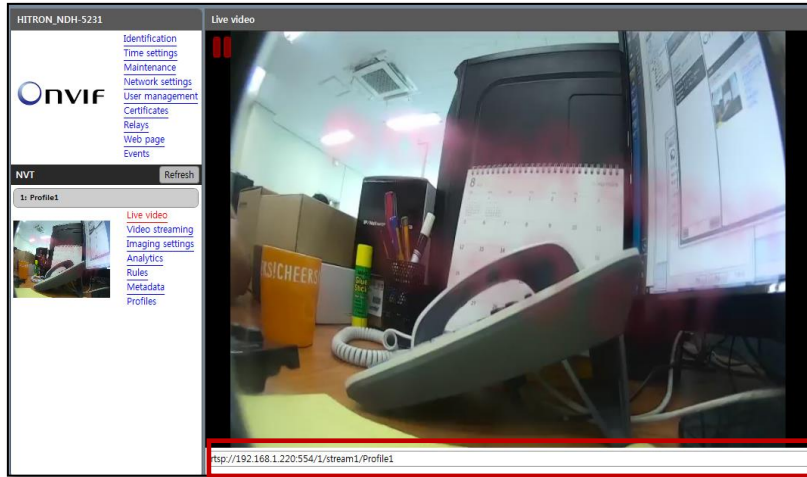


Step 2. Select IP Camera from the "Device list" and then select "Live video".



Step 3. The RTSP address is "rtsp://192.168.1.220:554/1/stream1/Profile1".

Source Path of the communication settings is set to "1/stream1/Profile1".



5. Supported addresses

There are no devices available for the TOP to use.