

# KDT Systems Co., Ltd.

## CIMON PLC Series

### HMI Protocol Serial Driver

---

Supported version TOP Design Studio V1.4.9.85 or higher



## CONTENTS

---

We want to thank our customers who use the Touch Operation Panel.

- 1. System configuration** [Page 2](#)  
Describes connectable devices and network configurations.
- 2. External device selection** [Page 4](#)  
Select a TOP model and an external device.
- 3. TOP communication setting** [Page 5](#)  
Describes how to set the TOP communication.
- 4. External device setting** [Page 11](#)  
Describes how to set up communication for external devices.
- 5. Cable table** [Page 12](#)  
Describe the cable specifications required for connection.
- 6. Supported addresses** [Page 15](#)  
Refer to this section to check the data addresses which can communicate with an external device.

# 1. System configuration

The system configuration of TOP and KDT Systems Co., Ltd. – CIMON HMI Protocol is as follows:

| Series       | CPU                                                                  | Link I/F                    | Communication method | System setting                                                                             | Cable                          |
|--------------|----------------------------------------------------------------------|-----------------------------|----------------------|--------------------------------------------------------------------------------------------|--------------------------------|
| XP           | CM1-XP1S                                                             | Built-in Serial             | RS-232C              | <a href="#">3. TOP communication setting</a><br><a href="#">4. External device setting</a> | <a href="#">5. Cable table</a> |
|              | CM1-XP1F                                                             | CM1-SC02A                   | RS-232C              |                                                                                            |                                |
|              | CM1-XP2F                                                             | CM1-SC02CDMA                | RS-422/485           |                                                                                            |                                |
|              | CM1-XP3F                                                             | CM1-SC01A                   | RS-232C              |                                                                                            |                                |
|              | CM1-XP1E                                                             | CM1-SC01B                   | RS-422/485           |                                                                                            |                                |
|              | CM1-XP2E                                                             |                             |                      |                                                                                            |                                |
|              | CM1-XP3E                                                             |                             |                      |                                                                                            |                                |
|              | CM1-XP1R                                                             | CM1-SC02A                   | RS-232C              |                                                                                            |                                |
| CM1-XP1A     | CM1-SC02CDMA                                                         | RS-422/485                  |                      |                                                                                            |                                |
| CM1-XP2A     | CM1-SC01A                                                            | RS-232C                     |                      |                                                                                            |                                |
| CM1-XP3A     | CM1-SC01B                                                            | RS-422/485                  |                      |                                                                                            |                                |
| CP           | CM1-CP3E                                                             | Built-in Serial             | RS-232C              |                                                                                            |                                |
|              | CM1-CP4E                                                             | CM1-SC02A                   | RS-232C              |                                                                                            |                                |
|              | CM1-CP4F                                                             | CM1-SC02CDMA                | RS-422/485           |                                                                                            |                                |
|              | CM1-CP4C                                                             | CM1-SC01A                   | RS-232C              |                                                                                            |                                |
|              | CM1-CP4D<br>CM1-CP4U                                                 | CM1-SC01B                   | RS-422/485           |                                                                                            |                                |
|              |                                                                      | Built-in Serial             | RS-485               |                                                                                            |                                |
|              |                                                                      | CM1-SC02A                   | RS-232C              |                                                                                            |                                |
|              |                                                                      | CM1-SC02CDMA                | RS-422/485           |                                                                                            |                                |
|              | CM1-CP3A<br>CM1-CP3B<br>CM1-CP3P<br>CM1-CP3U<br>CM1-CP4A<br>CM1-CP4B | CM1-SC01A                   | RS-232C              |                                                                                            |                                |
|              |                                                                      | CM1-SC01B                   | RS-422/485           |                                                                                            |                                |
|              |                                                                      |                             | RS-422/485           |                                                                                            |                                |
|              |                                                                      | CM1-SC02A                   | RS-232C              |                                                                                            |                                |
| CM1-SC02CDMA |                                                                      | RS-422/485                  |                      |                                                                                            |                                |
| CM1-SC01A    |                                                                      | RS-232C                     |                      |                                                                                            |                                |
| PLC-S        | CM3-SP32MDT                                                          | Built-in Serial             | RS-232C              |                                                                                            |                                |
|              | CM3-SP32MDTE                                                         | CM3-SP02ERS                 | RS-232C              |                                                                                            |                                |
|              | CM3-SP32MDC                                                          | CM3-SP02ERSC                | RS-422/485           |                                                                                            |                                |
|              | CM3-SP32MDCE                                                         | CM3-SP02ERR<br>CM3-SP02ERC  | RS-232C              |                                                                                            |                                |
|              | CM3-SP16MDR                                                          |                             |                      |                                                                                            |                                |
|              | CM3-SP16MDRE                                                         | Built-in Serial             | RS-232C              |                                                                                            |                                |
|              | CM3-SP32MDTV                                                         |                             | RS-485               |                                                                                            |                                |
|              | CM3-SP32MDTF                                                         | CM3-SP02ERS<br>CM3-SP02ERSC | RS-232C              |                                                                                            |                                |
|              | CM3-SP32MDCV                                                         |                             | RS-422/485           |                                                                                            |                                |
|              | CM3-SP32MDCF                                                         | CM3-SP02ERR<br>CM3-SP02ERC  | RS-232C              |                                                                                            |                                |
|              | CM3-SP16MDRV                                                         |                             |                      |                                                                                            |                                |
|              | CM3-SP16MDRF                                                         | CM3-SP02ERC                 |                      |                                                                                            |                                |

■ Connectable configuration

- 1:1 connection

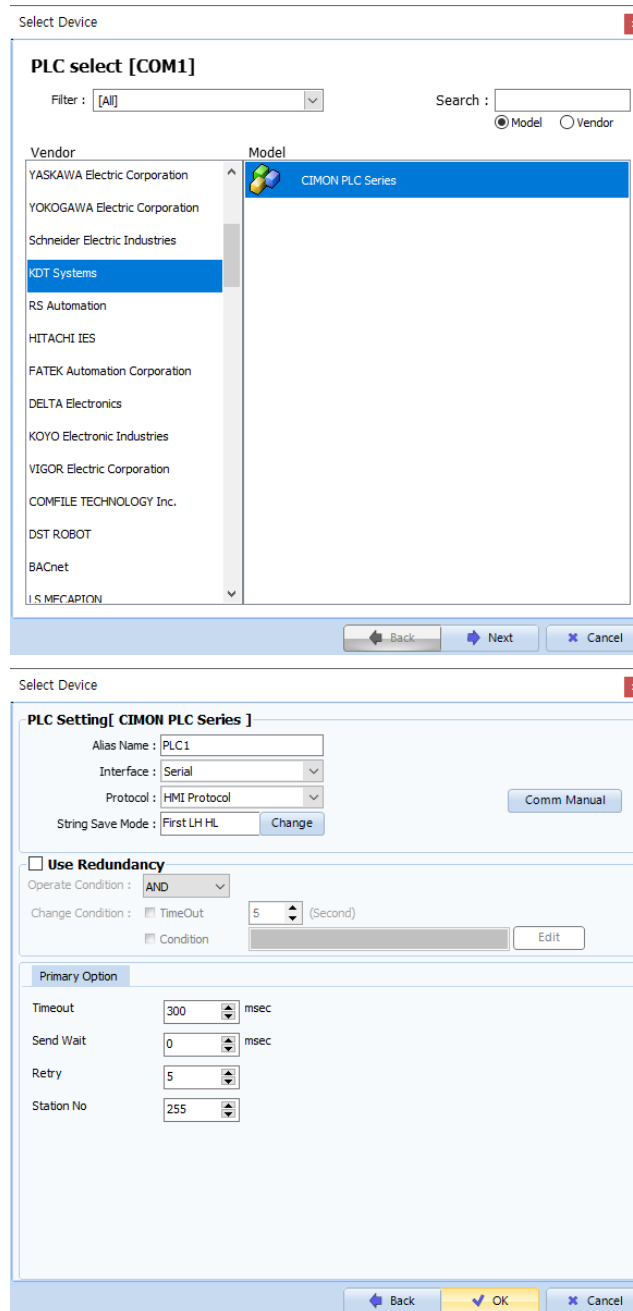


- 1:N connection



## 2. External device selection

- Select a TOP model and a port, and then select an external device.



| Settings         |           | Contents                                                                                                                                                                                                                                                                                                                                                                                                                                                       |       |           |          |                  |        |
|------------------|-----------|----------------------------------------------------------------------------------------------------------------------------------------------------------------------------------------------------------------------------------------------------------------------------------------------------------------------------------------------------------------------------------------------------------------------------------------------------------------|-------|-----------|----------|------------------|--------|
| TOP              | Model     | Check the display and process of TOP to select the touch model.                                                                                                                                                                                                                                                                                                                                                                                                |       |           |          |                  |        |
| External device  | Vendor    | Select the vendor of the external device to be connected to TOP.<br>Select "KDT Systems".                                                                                                                                                                                                                                                                                                                                                                      |       |           |          |                  |        |
|                  | PLC       | Select an external device to connect to TOP.<br><table border="1" style="width: 100%; border-collapse: collapse;"> <thead> <tr> <th>Model</th> <th>Interface</th> <th>Protocol</th> </tr> </thead> <tbody> <tr> <td>CIMON PLC Series</td> <td>Serial</td> <td>HMI Protocol</td> </tr> </tbody> </table> <p>Please check the system configuration in Chapter 1 to see if the external device you want to connect is a model whose system can be configured.</p> | Model | Interface | Protocol | CIMON PLC Series | Serial |
| Model            | Interface | Protocol                                                                                                                                                                                                                                                                                                                                                                                                                                                       |       |           |          |                  |        |
| CIMON PLC Series | Serial    | HMI Protocol                                                                                                                                                                                                                                                                                                                                                                                                                                                   |       |           |          |                  |        |

### 3. TOP communication setting

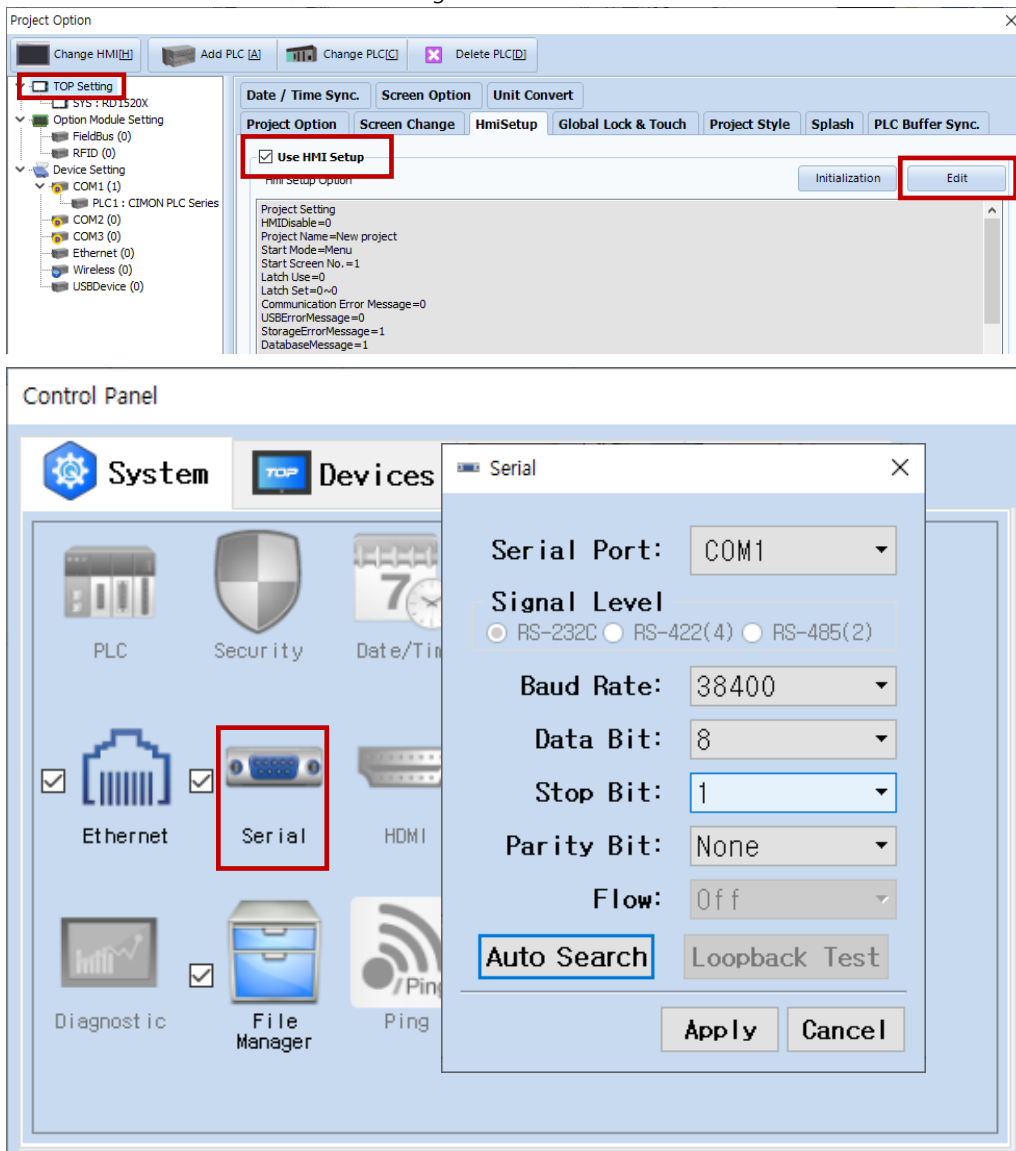
The communication can be set in TOP Design Studio or TOP main menu. The communication should be set in the same way as that of the external device.

#### 3.1 Communication setting in TOP Design Studio

##### (1) Communication interface setting

■ [Project] → [Property] → [TOP Setting] → [HMI Setup] → [Use HMI Setup Check] → [Edit] → [Serial]

– Set the TOP communication interface in TOP Design Studio.



| Items               | TOP                   | External device       | Remarks |
|---------------------|-----------------------|-----------------------|---------|
| Signal Level (port) | RS-232C<br>RS-422/485 | RS-232C<br>RS-422/485 |         |
| Baud Rate           | 38400                 |                       |         |
| Data Bit            | 8                     |                       |         |
| Stop Bit            | 1                     |                       |         |
| Parity Bit          | None.                 |                       |         |

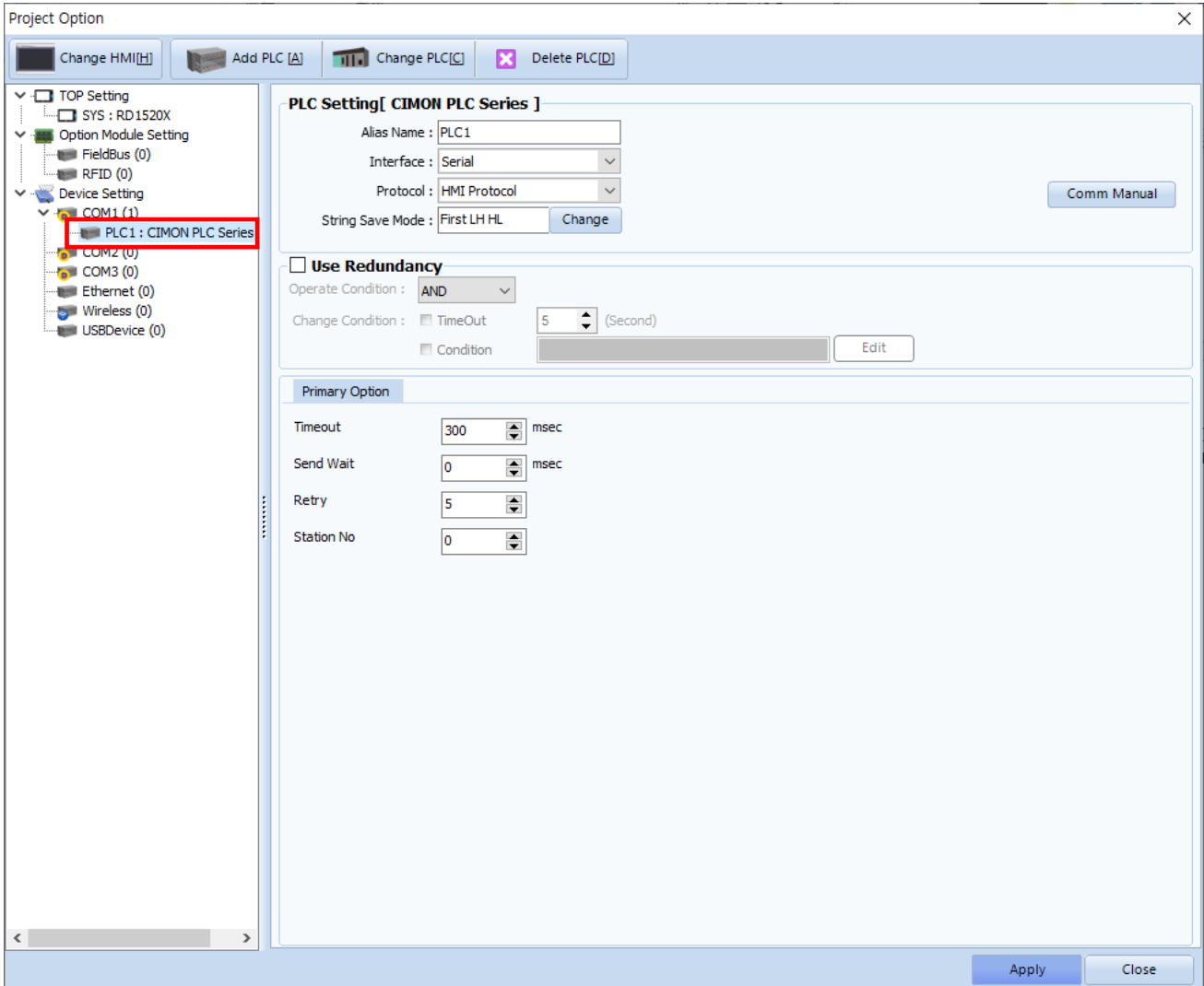
\* The above settings are examples recommended by the company.

| Items        | Description                                                                                     |
|--------------|-------------------------------------------------------------------------------------------------|
| Signal Level | Select the serial communication method between the TOP and an external device.                  |
| Baud Rate    | Select the serial communication speed between the TOP and an external device.                   |
| Data Bit     | Select the serial communication data bit between the TOP and an external device.                |
| Stop Bit     | Select the serial communication stop bit between the TOP and an external device.                |
| Parity Bit   | Select the serial communication parity bit check method between the TOP and an external device. |

**(2) Communication option setting**

■ [Project] → [Project Property] → [Device Setting > COM > CIMON PLC Series]

– Set the options of the CIMON PLC Series HMI Protocol communication driver in TOP Design Studio.

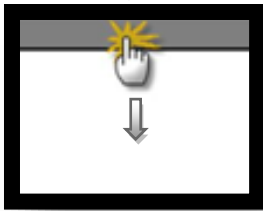


| Items         | Settings                                                                  | Remarks                                                   |
|---------------|---------------------------------------------------------------------------|-----------------------------------------------------------|
| Interface     | Select "Serial".                                                          | <a href="#">Refer to "2. External device selection"</a> . |
| Protocol      | Select "HMI Protocol".                                                    |                                                           |
| TimeOut (ms)  | Set the time to wait for a response from an external device.              |                                                           |
| SendWait (ms) | Set the waiting time before sending a data request to an external device. |                                                           |
| Station No    | Enter the prefix of an external device.                                   |                                                           |

### 3.2. Communication setting in TOP

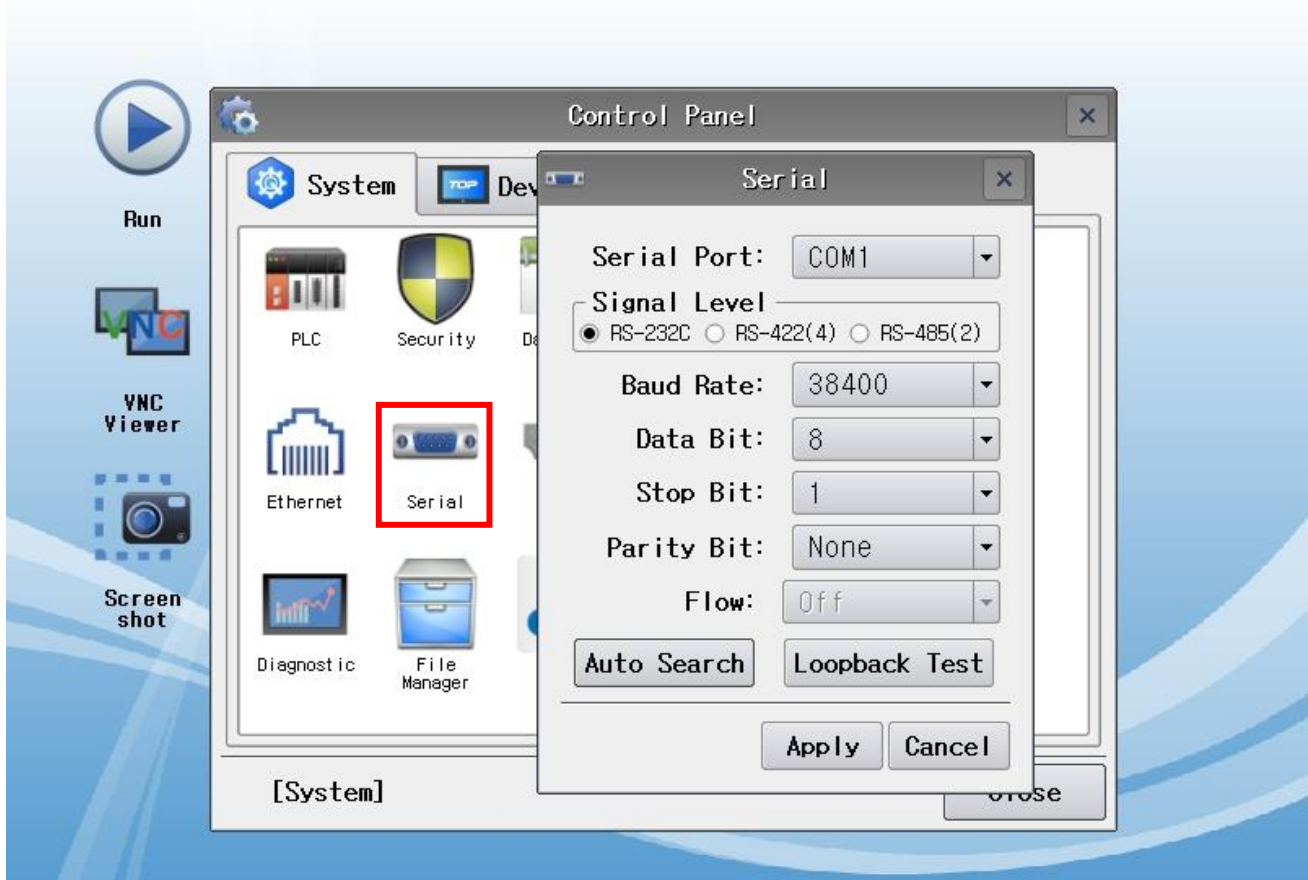
\* This is a setting method when "Use HMI Setup" in the setting items in "3.1 TOP Design Studio" is not checked.

- Touch the top of the TOP screen and drag it down. Touch "EXIT" in the pop-up window to go to the main screen.



#### (1) Communication interface setting

- [Control Panel] → [Serial]



TOPRX - TOPRX0800S

2021-08-31 04:46:19 PM

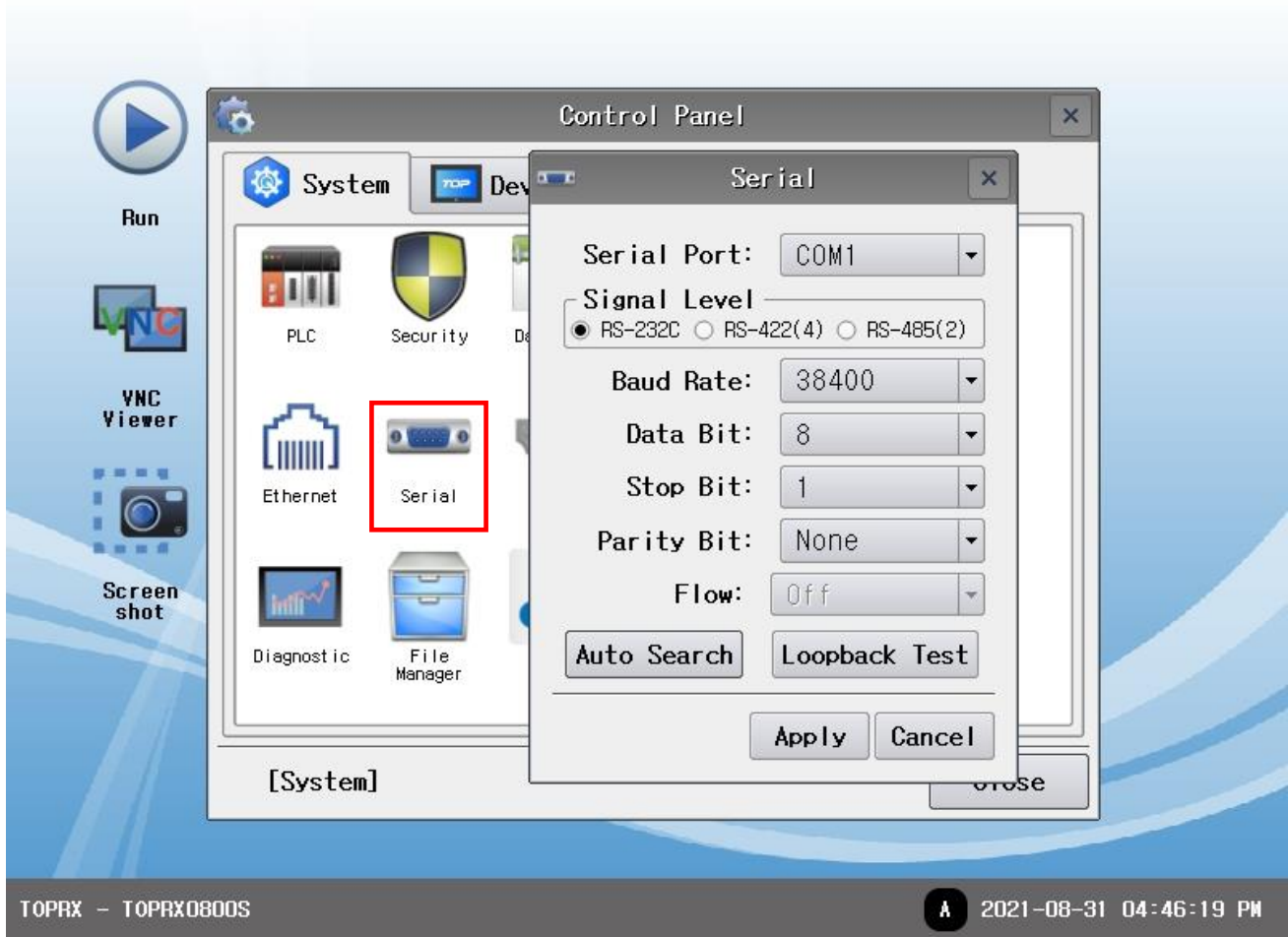
| Items               | TOP                   | External device       | Remarks |
|---------------------|-----------------------|-----------------------|---------|
| Signal Level (port) | RS-232C<br>RS-422/485 | RS-232C<br>RS-422/485 |         |
| Baud Rate           | 38400                 |                       |         |
| Data Bit            | 8                     |                       |         |
| Stop Bit            | 1                     |                       |         |
| Parity Bit          | None.                 |                       |         |

\* The above settings are setting examples recommended by the company.

| Items        | Description                                                                                     |
|--------------|-------------------------------------------------------------------------------------------------|
| Signal Level | Select the serial communication method between the TOP and an external device.                  |
| Baud Rate    | Select the serial communication speed between the TOP and an external device.                   |
| Data Bit     | Select the serial communication data bit between the TOP and an external device.                |
| Stop Bit     | Select the serial communication stop bit between the TOP and an external device.                |
| Parity Bit   | Select the serial communication parity bit check method between the TOP and an external device. |

(2) Communication option setting

■ [Control Panel] → [PLC]



TOPRX - TOPRX0800S

A 2021-08-31 04:46:19 PM

| Items         | Settings                                                                  | Remarks                                                  |
|---------------|---------------------------------------------------------------------------|----------------------------------------------------------|
| Interface     | Select "Serial".                                                          | <a href="#">Refer to "2. External device selection".</a> |
| Protocol      | Select "HMI Protocol".                                                    | <a href="#">Refer to "2. External device selection".</a> |
| TimeOut (ms)  | Set the time to wait for a response from an external device.              |                                                          |
| SendWait (ms) | Set the waiting time before sending a data request to an external device. |                                                          |
| Station No    | Enter the prefix of an external device.                                   |                                                          |



### 3.3 Communication diagnostics

- Check the interface setting status between the TOP and an external device.
  - Touch the top of the TOP screen and drag it down. Touch "EXIT" in the pop-up window to go to the main screen.
  - Check that the settings of the connected ports in [Control Panel] → [Serial] are the same as the settings of the external device.
  
- Diagnosis of whether the port communication is normal or not
  - Touch "Communication Diagnostics" in [Control Panel] → [PLC].
  - Check whether communication is connected or not.

|                                            |                                                                                                   |
|--------------------------------------------|---------------------------------------------------------------------------------------------------|
| <b>Communication diagnostics succeeded</b> | <b>Communication setting normal</b>                                                               |
| <b>Error message</b>                       | <b>Communication setting abnormal</b>                                                             |
|                                            | - Check the cable, TOP, and external device settings. (Refer to Communication diagnostics sheet.) |

- Communication diagnostics sheet
  - If there is a problem with the communication connection with an external terminal, please check the settings in the sheet below.

| Items                | Contents                              | Check                     |    | Remarks                                                                                  |    |
|----------------------|---------------------------------------|---------------------------|----|------------------------------------------------------------------------------------------|----|
| System configuration | How to connect the system             | OK                        | NG | <a href="#">1. System configuration</a>                                                  |    |
|                      | Connection cable name                 | OK                        | NG |                                                                                          |    |
| TOP                  | Version information                   | OK                        | NG | <a href="#">2. External device selection</a><br><a href="#">3. Communication setting</a> |    |
|                      | Port in use                           | OK                        | NG |                                                                                          |    |
|                      | Driver name                           | OK                        | NG |                                                                                          |    |
|                      | Other detailed settings               | OK                        | NG |                                                                                          |    |
|                      | Relative prefix                       | Project setting           | OK |                                                                                          | NG |
|                      |                                       | Communication diagnostics | OK |                                                                                          | NG |
|                      | Serial Parameter                      | Transmission Speed        | OK |                                                                                          | NG |
|                      |                                       | Data Bit                  | OK |                                                                                          | NG |
| Stop Bit             |                                       | OK                        | NG |                                                                                          |    |
| Parity Bit           |                                       | OK                        | NG |                                                                                          |    |
| External device      | CPU name                              | OK                        | NG | <a href="#">4. External device setting</a>                                               |    |
|                      | Communication port name (module name) | OK                        | NG |                                                                                          |    |
|                      | Protocol (mode)                       | OK                        | NG |                                                                                          |    |
|                      | Setup Prefix                          | OK                        | NG |                                                                                          |    |
|                      | Other detailed settings               | OK                        | NG |                                                                                          |    |
|                      | Serial Parameter                      | Transmission Speed        | OK |                                                                                          | NG |
|                      |                                       | Data Bit                  | OK |                                                                                          | NG |
|                      |                                       | Stop Bit                  | OK |                                                                                          | NG |
| Parity Bit           |                                       | OK                        | NG |                                                                                          |    |
|                      | Check address range                   | OK                        | NG | <a href="#">6. Supported addresses</a>                                                   |    |

## 4. External device setting

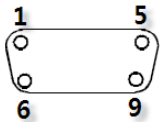
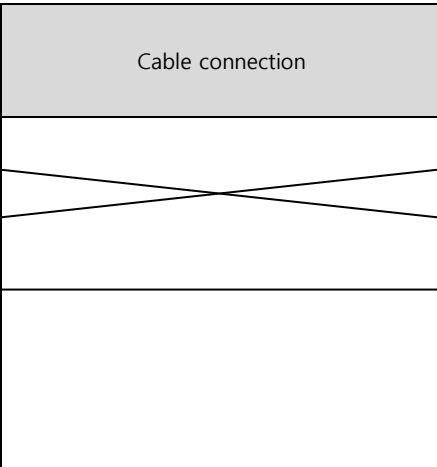
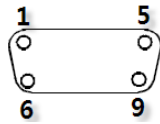
Refer to the user manual of the vendor and configure the communication channel options.

| Items                   |                           | Settings     | Remarks      |
|-------------------------|---------------------------|--------------|--------------|
| Operation mode          | Protocol                  | HMI protocol | <b>Fixed</b> |
|                         | Prefix                    | 0            |              |
| Communication parameter | Communication speed (BPS) | 38400        |              |
|                         |                           | None         |              |
|                         | Data bit                  | 8            |              |
|                         | Stop bit                  | 1            |              |
|                         |                           | 0            |              |

## 5. Cable table

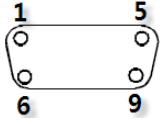
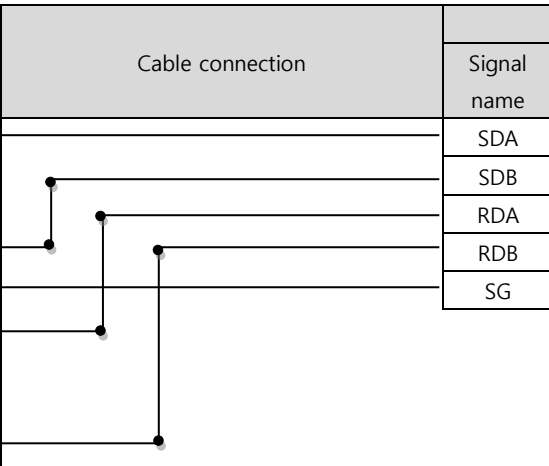
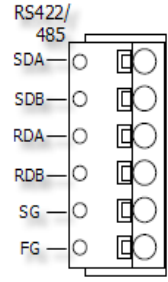
This chapter introduces a cable diagram for normal communication between the TOP and the external device.  
 (The cable diagram described in this section may differ from the recommendations of "KDT Systems Co., Ltd.")

### ■ RS-232C

| TOP                                                                                                                                                                    |             |            | Cable connection                                                                   | External device |             |                                                                                                                                                                          |    |
|------------------------------------------------------------------------------------------------------------------------------------------------------------------------|-------------|------------|------------------------------------------------------------------------------------|-----------------|-------------|--------------------------------------------------------------------------------------------------------------------------------------------------------------------------|----|
| Pin arrangement <sup>*Note 1)</sup>                                                                                                                                    | Signal name | Pin number |                                                                                    | Pin number      | Signal name | Pin arrangement <sup>*Note 1)</sup>                                                                                                                                      |    |
|  <p>Based on communication cable connector front, D-SUB 9 Pin male (male, convex)</p> |             | 1          |  | 1               |             |  <p>Based on communication cable connector front, D-SUB 9 Pin male (male, convex)</p> |    |
|                                                                                                                                                                        | RD          | 2          |                                                                                    | 2               | RD          |                                                                                                                                                                          |    |
|                                                                                                                                                                        | SD          | 3          |                                                                                    | 3               | 3           |                                                                                                                                                                          | SD |
|                                                                                                                                                                        |             | 4          |                                                                                    | 4               | 4           |                                                                                                                                                                          |    |
|                                                                                                                                                                        | SG          | 5          |                                                                                    | 5               | 5           |                                                                                                                                                                          | SG |
|                                                                                                                                                                        |             | 6          |                                                                                    | 6               | 6           |                                                                                                                                                                          |    |
|                                                                                                                                                                        |             | 7          |                                                                                    | 7               | 7           |                                                                                                                                                                          |    |
|                                                                                                                                                                        |             | 8          |                                                                                    | 8               | 8           |                                                                                                                                                                          |    |
|                                                                                                                                                                        |             | 9          |                                                                                    | 9               | 9           |                                                                                                                                                                          |    |

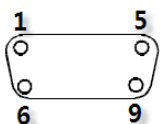
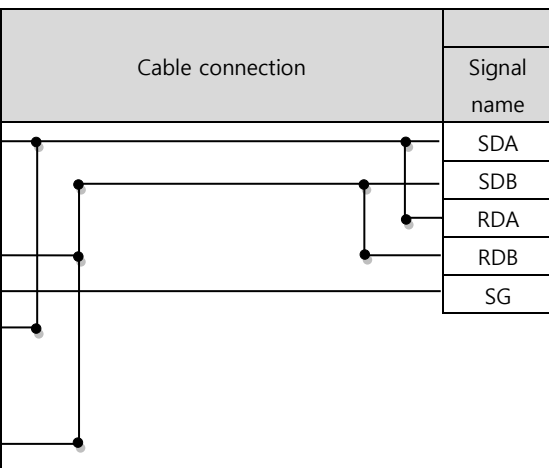
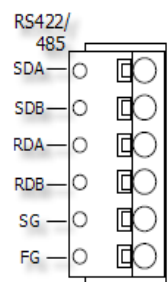
<sup>\*Note 1)</sup> The pin arrangement is as seen from the connecting side of the cable connection connector.

### ■ RS-422

| TOP                                                                                                                                                                      |             |            | Cable connection                                                                    | External device |                                                                                       |
|--------------------------------------------------------------------------------------------------------------------------------------------------------------------------|-------------|------------|-------------------------------------------------------------------------------------|-----------------|---------------------------------------------------------------------------------------|
| Pin arrangement <sup>*Note 1)</sup>                                                                                                                                      | Signal name | Pin number |                                                                                     | Signal name     | Pin arrangement                                                                       |
|  <p>Based on communication cable connector front, D-SUB 9 Pin male (male, convex)</p> | RDA         | 1          |  | SDA             |  |
|                                                                                                                                                                          |             | 2          |                                                                                     | SDB             |                                                                                       |
|                                                                                                                                                                          |             | 3          |                                                                                     | RDA             |                                                                                       |
|                                                                                                                                                                          | RDB         | 4          |                                                                                     | RDB             |                                                                                       |
|                                                                                                                                                                          | SG          | 5          |                                                                                     | SG              |                                                                                       |
|                                                                                                                                                                          | SDA         | 6          |                                                                                     |                 |                                                                                       |
|                                                                                                                                                                          |             | 7          |                                                                                     |                 |                                                                                       |
|                                                                                                                                                                          |             | 8          |                                                                                     |                 |                                                                                       |
|                                                                                                                                                                          | SDB         | 9          |                                                                                     |                 |                                                                                       |

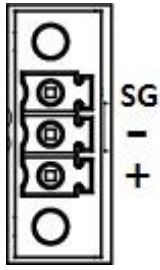
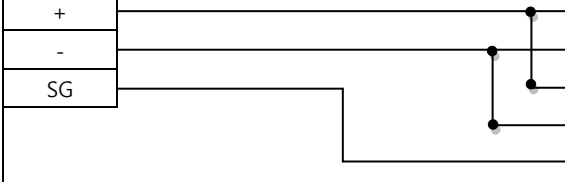
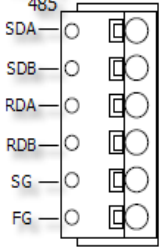
<sup>\*Note 1)</sup> The pin arrangement is as seen from the connecting side of the cable connection connector.

### ■ RS-485

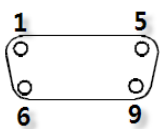
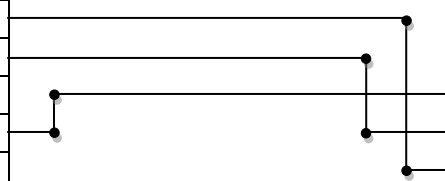
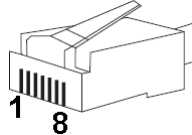
| TOP                                                                                                                                                                      |             |            | Cable connection                                                                     | External device |                                                                                       |
|--------------------------------------------------------------------------------------------------------------------------------------------------------------------------|-------------|------------|--------------------------------------------------------------------------------------|-----------------|---------------------------------------------------------------------------------------|
| Pin arrangement <sup>*Note 1)</sup>                                                                                                                                      | Signal name | Pin number |                                                                                      | Signal name     | Pin arrangement                                                                       |
|  <p>Based on communication cable connector front, D-SUB 9 Pin male (male, convex)</p> | RDA         | 1          |  | SDA             |  |
|                                                                                                                                                                          |             | 2          |                                                                                      | SDB             |                                                                                       |
|                                                                                                                                                                          |             | 3          |                                                                                      | RDA             |                                                                                       |
|                                                                                                                                                                          | RDB         | 4          |                                                                                      | RDB             |                                                                                       |
|                                                                                                                                                                          | SG          | 5          |                                                                                      | SG              |                                                                                       |
|                                                                                                                                                                          | SDA         | 6          |                                                                                      |                 |                                                                                       |
|                                                                                                                                                                          |             | 7          |                                                                                      |                 |                                                                                       |
|                                                                                                                                                                          |             | 8          |                                                                                      |                 |                                                                                       |
|                                                                                                                                                                          | SDB         | 9          |                                                                                      |                 |                                                                                       |

<sup>\*Note 1)</sup> The pin arrangement is as seen from the connecting side of the cable connection connector.

■ RS-485

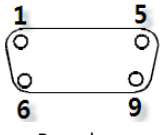
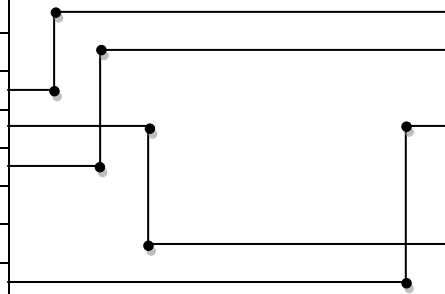
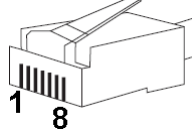
| TOP                                                                               |             | Cable connection                                                                   | External device |                                                                                     |
|-----------------------------------------------------------------------------------|-------------|------------------------------------------------------------------------------------|-----------------|-------------------------------------------------------------------------------------|
| Pin arrangement                                                                   | Signal name |                                                                                    | Signal name     | Pin arrangement                                                                     |
|  | +           |  | SDA             |  |
|                                                                                   | -           |                                                                                    | SDB             |                                                                                     |
|                                                                                   | SG          |                                                                                    | RDA             |                                                                                     |
|                                                                                   | RDB         |                                                                                    |                 |                                                                                     |
|                                                                                   | SG          |                                                                                    |                 |                                                                                     |
|                                                                                   |             |                                                                                    |                 |                                                                                     |

■ RS-232C

| TOP                                                                                                                                                                    |             |            | Cable connection                                                                   | External device |             |                                                                                                                                                                         |
|------------------------------------------------------------------------------------------------------------------------------------------------------------------------|-------------|------------|------------------------------------------------------------------------------------|-----------------|-------------|-------------------------------------------------------------------------------------------------------------------------------------------------------------------------|
| Pin arrangement <sup>*Note 1)</sup>                                                                                                                                    | Signal name | Pin number |                                                                                    | Pin number      | Signal name | Pin arrangement <sup>*Note 1)</sup>                                                                                                                                     |
|  <p>Based on communication cable connector front, D-SUB 9 Pin male (male, convex)</p> | CD          | 1          |  | 1               |             |  <p>Based on communication cable connector front, 8-pin male RJ45 (Male, convex)</p> |
|                                                                                                                                                                        | RD          | 2          |                                                                                    | 2               |             |                                                                                                                                                                         |
|                                                                                                                                                                        | SD          | 3          |                                                                                    | 3               |             |                                                                                                                                                                         |
|                                                                                                                                                                        | DTR         | 4          |                                                                                    | 4               | SG          |                                                                                                                                                                         |
|                                                                                                                                                                        | SG          | 5          |                                                                                    | 5               | RD          |                                                                                                                                                                         |
|                                                                                                                                                                        | DSR         | 6          |                                                                                    | 6               | SD          |                                                                                                                                                                         |
|                                                                                                                                                                        | RTS         | 7          |                                                                                    | 7               |             |                                                                                                                                                                         |
|                                                                                                                                                                        | CTS         | 8          |                                                                                    | 8               |             |                                                                                                                                                                         |
|                                                                                                                                                                        |             | 9          |                                                                                    |                 |             |                                                                                                                                                                         |

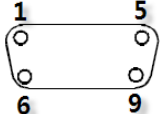
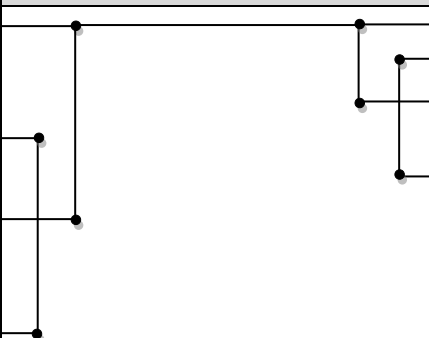
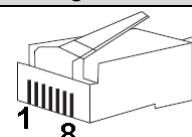
\*Note 1) The pin arrangement is as seen from the connecting side of the cable connection connector.

■ RS-422

| TOP                                                                                                                                                                      |             |            | Cable connection                                                                     | External device |             |                                                                                                                                                                           |
|--------------------------------------------------------------------------------------------------------------------------------------------------------------------------|-------------|------------|--------------------------------------------------------------------------------------|-----------------|-------------|---------------------------------------------------------------------------------------------------------------------------------------------------------------------------|
| Pin arrangement <sup>*Note 1)</sup>                                                                                                                                      | Signal name | Pin number |                                                                                      | Pin number      | Signal name | Pin arrangement <sup>*Note 1)</sup>                                                                                                                                       |
|  <p>Based on communication cable connector front, D-SUB 9 Pin male (male, convex)</p> | RDA         | 1          |  | 1               | SDA         |  <p>Based on communication cable connector front, 8-pin male RJ45 (Male, convex)</p> |
|                                                                                                                                                                          |             |            |                                                                                      | 2               |             |                                                                                                                                                                           |
|                                                                                                                                                                          |             |            |                                                                                      | 3               |             |                                                                                                                                                                           |
|                                                                                                                                                                          | RDB         | 4          |                                                                                      | 4               |             |                                                                                                                                                                           |
|                                                                                                                                                                          | SG          | 5          |                                                                                      | 5               | RDB         |                                                                                                                                                                           |
|                                                                                                                                                                          | SDA         | 6          |                                                                                      | 6               |             |                                                                                                                                                                           |
|                                                                                                                                                                          |             |            |                                                                                      | 7               |             |                                                                                                                                                                           |
|                                                                                                                                                                          |             |            |                                                                                      | 8               | SG          |                                                                                                                                                                           |
|                                                                                                                                                                          | SDB         | 9          |                                                                                      |                 |             |                                                                                                                                                                           |

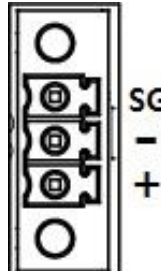
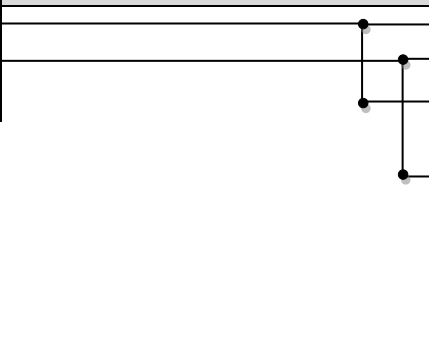
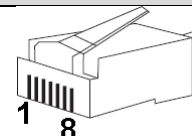
\*Note 1) The pin arrangement is as seen from the connecting side of the cable connection connector.

■ RS-485

| TOP                                                                                                                                                                    |             |            | Cable connection                                                                   | External device |             |                                                                                                                                                                         |
|------------------------------------------------------------------------------------------------------------------------------------------------------------------------|-------------|------------|------------------------------------------------------------------------------------|-----------------|-------------|-------------------------------------------------------------------------------------------------------------------------------------------------------------------------|
| Pin arrangement <sup>*Note 1)</sup>                                                                                                                                    | Signal name | Pin number |                                                                                    | Pin number      | Signal name | Pin arrangement <sup>*Note 1)</sup>                                                                                                                                     |
|  <p>Based on communication cable connector front, D-SUB 9 Pin male (male, convex)</p> | RDA         | 1          |  | 1               | SDA         |  <p>Based on communication cable connector front, 8-pin male RJ45 (Male, convex)</p> |
|                                                                                                                                                                        |             | 2          |                                                                                    | 2               | SDB         |                                                                                                                                                                         |
|                                                                                                                                                                        |             | 3          |                                                                                    | 3               | RDA         |                                                                                                                                                                         |
|                                                                                                                                                                        | RDB         | 4          |                                                                                    | 4               |             |                                                                                                                                                                         |
|                                                                                                                                                                        | SG          | 5          |                                                                                    | 5               | RDB         |                                                                                                                                                                         |
|                                                                                                                                                                        | SDA         | 6          |                                                                                    | 6               |             |                                                                                                                                                                         |
|                                                                                                                                                                        |             | 7          |                                                                                    | 7               |             |                                                                                                                                                                         |
|                                                                                                                                                                        |             | 8          |                                                                                    | 8               | SG          |                                                                                                                                                                         |
|                                                                                                                                                                        | SDB         | 9          |                                                                                    | 9               |             |                                                                                                                                                                         |

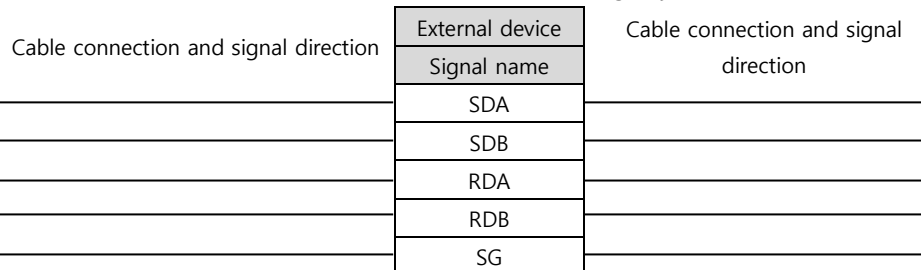
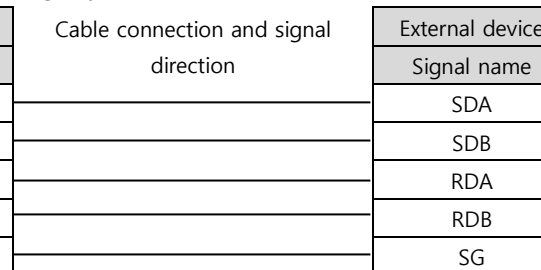
\*Note 1) The pin arrangement is as seen from the connecting side of the cable connection connector.

■ RS-485

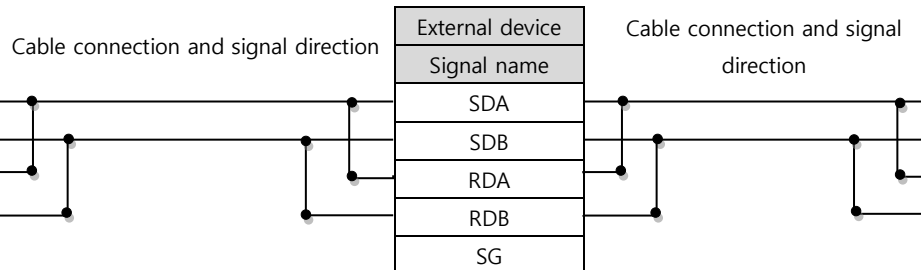
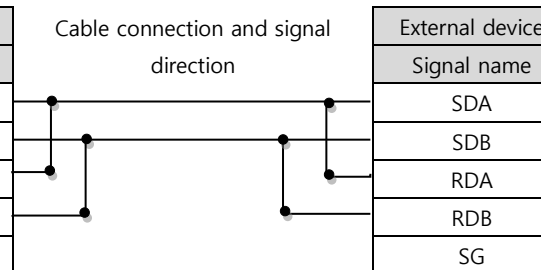
| TOP                                                                                |             | Cable connection                                                                    | External device |             |                                                                                                                                                                          |
|------------------------------------------------------------------------------------|-------------|-------------------------------------------------------------------------------------|-----------------|-------------|--------------------------------------------------------------------------------------------------------------------------------------------------------------------------|
| Pin arrangement                                                                    | Signal name |                                                                                     | Pin number      | Signal name | Pin arrangement <sup>*Note 1)</sup>                                                                                                                                      |
|  | +           |  | 1               | SDA         |  <p>Based on communication cable connector front, 8-pin male RJ45 (Male, convex)</p> |
|                                                                                    | -           |                                                                                     | 2               | SDB         |                                                                                                                                                                          |
|                                                                                    | SG          |                                                                                     | 3               | RDA         |                                                                                                                                                                          |
|                                                                                    |             |                                                                                     | 4               |             |                                                                                                                                                                          |
|                                                                                    |             |                                                                                     | 5               | RDB         |                                                                                                                                                                          |
|                                                                                    |             |                                                                                     | 6               |             |                                                                                                                                                                          |
|                                                                                    |             |                                                                                     | 7               |             |                                                                                                                                                                          |
|                                                                                    |             |                                                                                     | 8               | SG          |                                                                                                                                                                          |

\*Note 1) The pin arrangement is as seen from the connecting side of the cable connection connector.

■ RS-422 1:N connection – Refer to 1:1 connection to connect in the following way.

| TOP         | Cable connection and signal direction                                                | External device | Cable connection and signal direction                                                | External device |
|-------------|--------------------------------------------------------------------------------------|-----------------|--------------------------------------------------------------------------------------|-----------------|
| Signal name |                                                                                      | Signal name     |                                                                                      | Signal name     |
| RDA         |  | SDA             |  | SDA             |
| RDB         |                                                                                      | SDB             |                                                                                      | SDB             |
| SDA         |                                                                                      | RDA             |                                                                                      | RDA             |
| SDB         |                                                                                      | RDB             |                                                                                      | RDB             |
| SG          |                                                                                      | SG              |                                                                                      | SG              |

■ RS-485 1:N connection – Refer to 1:1 connection to connect in the following way.

| TOP         | Cable connection and signal direction                                                | External device | Cable connection and signal direction                                                | External device |
|-------------|--------------------------------------------------------------------------------------|-----------------|--------------------------------------------------------------------------------------|-----------------|
| Signal name |                                                                                      | Signal name     |                                                                                      | Signal name     |
| RDA         |  | SDA             |  | SDA             |
| RDB         |                                                                                      | SDB             |                                                                                      | SDB             |
| SDA         |                                                                                      | RDA             |                                                                                      | RDA             |
| SDB         |                                                                                      | RDB             |                                                                                      | RDB             |
| SG          |                                                                                      | SG              |                                                                                      | SG              |

## 6. Supported addresses

The devices available in TOP are as follows:

The device range (address) may differ depending on the CPU module series/type. The TOP series supports the maximum address range used by the external device series. Please refer to each CPU module user manual and be take caution to not deviate from the address range supported by the device you want to use.

| Address       |         | Bit                   | Word            | Remarks |
|---------------|---------|-----------------------|-----------------|---------|
| Input relay   |         | X00000– X1023F        | X00000 – X10230 |         |
| Output relay  |         | Y00000 – Y1023F       | Y00000 – Y10230 |         |
| Sub relay     |         | M00000 – M4095F       | M00000 – M40950 |         |
| Keep relay    |         | K00000 – K4095F       | K00000 – K40950 |         |
| Link relay    |         | L00000 – L4095F       | L00000 – L40950 |         |
| Timer         | contact | T0000 – T4095         | —               |         |
|               | current | —                     | TC0000 – TC4095 |         |
|               | setting | —                     | TS0000 – TS4095 |         |
| Counter       | contact | C0000 – C4095         | —               |         |
|               | current | —                     | CC0000 – CC4095 |         |
|               | setting | —                     | CS0000 – CS4095 |         |
| Data register |         | D00000.00 – D32766.15 | D00000 – D32766 |         |